



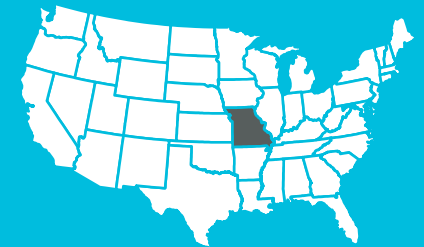
GLOBAL AGTECH LEADER: Missouri is the global leader in agtech and gateway to the future of advanced farming, leading the way with innovative technology and research that is transforming agriculture.

DYNAMIC CLUSTERS: Missouri is home to dynamic animal health and plant science clusters, and agtech research is taking place across Missouri in innovation communities and leading educational institutions.

LEADING COMPANIES: We are also proud to be home to leading agtech organizations, including the Danforth Plant Science Center*, Monsanto*, the Missouri Botanical Garden*, Yield Lab*, DuPont, BASF, Bayer, Bunge, KWS, Zoetis, Boehringer Ingelheim, AgriLabs*, and many more.
**headquartered in Missouri*

A DIVERSE FOUNDATION: Missouri's crop and livestock diversity, abundant water supply and rich soil provide a solid, statewide foundation to the agtech ecosystem.

ACCESS TO GROWTH: In Missouri, you have access to intellectual capital, an extensive agtech infrastructure and extensive funding support. Missouri is leading the way in investment and innovation in advanced farming.



\$88 Billion
agricultural industry

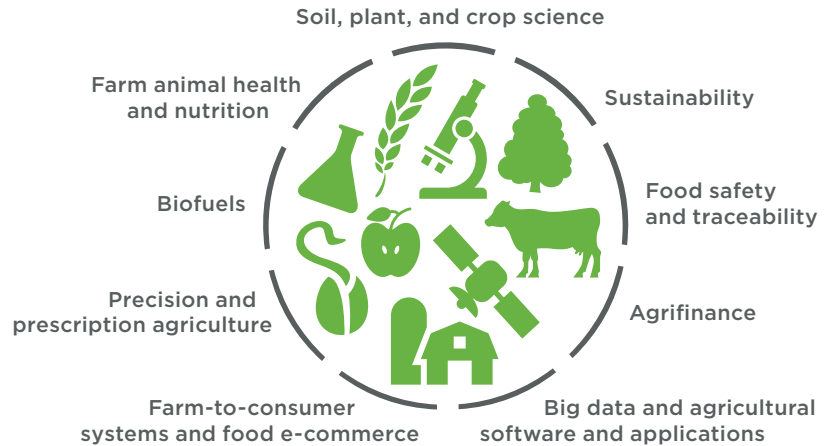
378,000
employed in
agriculture

MISSOURI

What Can We Grow For You? ®

GROWING IN MISSOURI:

In Missouri, the future of agtech is happening today. Big data, smart farming, input optimization, precision ag, prescription ag, biologicals, breeding, green chemistry, green pharmaceuticals ... it's all growing right here.



THIS IS AGTECH



THRIVING INDUSTRY: Missouri is home to global leaders in agtech including:



Bayer CropScience



MONSANTO



The Missouri Partnership is a public-private economic development organization focused on attracting new jobs and investment to the state and promoting Missouri's business strengths. We work in partnership with the Hawthorn Foundation, the Missouri Department of Economic Development, the State of Missouri, and economic development agencies across the state.

www.missouripartnership.com • 314-725-0949

MISSOURI
PARTNERSHIP®

Updated June 2018